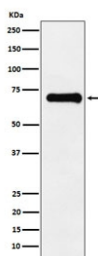


Phospho-PAK4/5/6 Antibody [clone ADFF-16] (RQ4826)

Catalog No.	Formulation	Size
RQ4826	Antibody in PBS with 0.02% sodium azide, 50% glycerol and 0.4-0.5mg/ml BSA	100 ul

[Bulk quote request](#)

Availability	1-2 weeks
Species Reactivity	Human
Format	Purified
Host	Rabbit
Clonality	Monoclonal (rabbit origin)
Isotype	Rabbit IgG
Clone Name	ADFF-16
Purity	Affinity purified
UniProt	O96013
Applications	Western Blot : 1:500-1:2000
Limitations	This phospho-PAK4/5/6 antibody is available for research use only.



Western blot testing with phospho-PAK4/5/6 antibody. Predicted molecular weight ~64 kDa (PAK4), ~81 kDa (PAK5) and ~75 kDa (PAK6).

Description

PAK proteins, a family of serine/threonine p21-activating kinases, serve as targets for the small GTP binding proteins Cdc42 and RAC and have been implicated in a wide range of biological activities.

Application Notes

Optimal dilution of the phospho-PAK4/5/6 antibody should be determined by the researcher.

Immunogen

A synthetic peptide specific to human PAK4/5/6 (surrounding PAK4-pS474/PAK5-pS560/PAK6-pS602) was used as the immunogen for the phospho-PAK4/5/6 antibody.

Storage

Store the phospho-PAK4/5/6 antibody at -20oC.