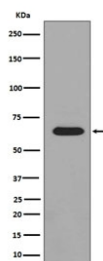


Phospho-PAK1/2/3 Antibody (pS144/pS141/pS139) [clone CFF-16] (RQ4789)

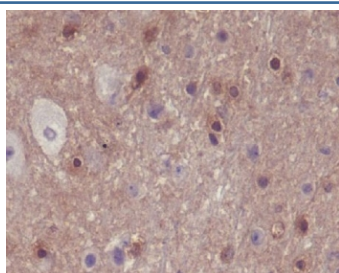
Catalog No.	Formulation	Size
RQ4789	Antibody in PBS with 0.02% sodium azide, 50% glycerol and 0.4-0.5mg/ml BSA	100 ul

[Bulk quote request](#)

Availability	1-2 weeks
Species Reactivity	Human, Mouse
Format	Purified
Host	Rabbit
Clonality	Rabbit Monoclonal
Isotype	Rabbit IgG
Clone Name	CFF-16
Purity	Affinity purified
UniProt	O75914
Applications	Western Blot : 1:1000-1:10000 Immunohistochemistry (FFPE) : 1:50-1:200
Limitations	This phospho-PAK1/2/3 antibody is available for research use only.



Western blot testing of lysate from lambda phosphatase-treated human HeLa cells with phospho-PAK1/2/3 antibody. Predicted molecular weight ~62 kDa.



IHC staining of FFPE mouse brain with phospho-PAK1/2/3 antibody. HIER: boil tissue sections in pH6, 10mM citrate buffer, for 10-20 min and allow to cool before testing.

Description

PAK proteins, a family of serine/threonine p21-activating kinases, serve as targets for the small GTP binding proteins Cdc42 and RAC and have been implicated in a wide range of biological activities.

Application Notes

Optimal dilution of the phospho-PAK1/2/3 antibody should be determined by the researcher.

Immunogen

A synthetic peptide specific to human PAK1/2/3 (surrounding pS144/pS141/pS139) was used as the immunogen for the phospho-PAK1/2/3 antibody.

Storage

Store the phospho-PAK1/2/3 antibody at -20oC.