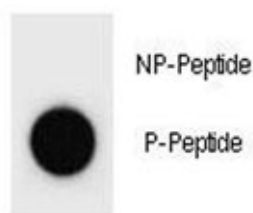


Phospho-p21 Antibody (pS125) (F40068)

Catalog No.	Formulation	Size
F40068-0.4ML	In 1X PBS, pH 7.4, with 0.09% sodium azide	0.4 ml
F40068-0.08ML	In 1X PBS, pH 7.4, with 0.09% sodium azide	0.08 ml

[Bulk quote request](#)

Availability	1-3 business days
Species Reactivity	Mouse
Format	Antigen affinity purified
Host	Rabbit
Clonality	Polyclonal (rabbit origin)
Isotype	Rabbit Ig
Purity	Antigen affinity
UniProt	P39689
Applications	Dot Blot : 1:500
Limitations	This phospho-p21 antibody is available for research use only.



Dot blot analysis of phospho-p21 antibody. 50ng of phos-peptide or nonphos-peptide per dot were spotted.

Description

The protein encoded by this gene belongs to the highly conserved cyclin family, whose members are characterized by a dramatic periodicity in protein abundance through the cell cycle. Cyclins function as regulators of CDK kinases. Different cyclins exhibit distinct expression and degradation patterns which contribute to the temporal coordination of each mitotic event. This cyclin forms a complex with and functions as a regulatory subunit of CDK4 or CDK6, whose activity is required for cell cycle G1/S transition. This protein has been shown to interact with and be involved in the phosphorylation of tumor suppressor protein Rb. The CDK4 activity associated with this cyclin was reported to be necessary for cell cycle progression through G2 phase into mitosis after UV radiation. Several transcript variants encoding different isoforms have

been found for this gene.

Application Notes

Titration of the phospho-p21 antibody may be required due to differences in protocols and secondary/substrate sensitivity.

Immunogen

This phospho-p21 antibody was produced from rabbits immunized with a KLH conjugated synthetic phosphopeptide corresponding to amino acid residues surrounding pS125 of mouse p21Cip1.

Storage

Aliquot the phospho-p21 antibody and store frozen at -20oC or colder. Avoid repeated freeze-thaw cycles.