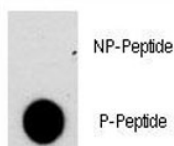


Phospho-NFATC2 Antibody (pS330) (F48518)

Catalog No.	Formulation	Size
F48518-0.4ML	In 1X PBS, pH 7.4, with 0.09% sodium azide	0.4 ml
F48518-0.08ML	In 1X PBS, pH 7.4, with 0.09% sodium azide	0.08 ml

[Bulk quote request](#)

Availability	1-3 business days
Species Reactivity	Human
Format	Antigen affinity purified
Host	Rabbit
Clonality	Polyclonal (rabbit origin)
Isotype	Rabbit Ig
Purity	Antigen affinity
UniProt	Q13469
Applications	Dot Blot : 1:500
Limitations	This phospho-NFATC2 antibody is available for research use only.



Dot blot analysis of phospho-NFATC2 antibody. 50ng of phos-peptide or nonphos-peptide per dot were spotted.

Description

NFATC2 is a member of the nuclear factor of activated T cells (NFAT) family. It is a DNA-binding protein with a REL-homology region (RHR) and an NFAT-homology region (NHR). This protein is present in the cytosol and only translocates to the nucleus upon T cell receptor (TCR) stimulation, where it becomes a member of the nuclear factors of activated T cells transcription complex. This complex plays a central role in inducing gene transcription during the immune response.

Application Notes

Titration of the phospho-NFATC2 antibody may be required due to differences in protocols and secondary/substrate sensitivity.

Immunogen

This phospho-NFATC2 antibody was produced from rabbits immunized with a KLH conjugated synthetic phosphopeptide corresponding to amino acid residues surrounding pS330 of human NFATC2.

Storage

Aliquot the phospho-NFATC2 antibody and store frozen at -20oC or colder. Avoid repeated freeze-thaw cycles.