

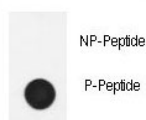
Phospho-Nephrin Antibody (pY1210) (F48647)

Catalog No.	Formulation	Size
F48647-0.4ML	In 1X PBS, pH 7.4, with 0.09% sodium azide	0.4 ml
F48647-0.08ML	In 1X PBS, pH 7.4, with 0.09% sodium azide	0.08 ml

[Bulk quote request](#)

Availability	1-3 business days
Species Reactivity	Human
Format	Antigen affinity purified
Host	Rabbit
Clonality	Polyclonal (rabbit origin)
Isotype	Rabbit Ig
Purity	Antigen affinity
UniProt	O60500
Applications	Dot Blot : 1:500
Limitations	This phospho-Nephrin antibody is available for research use only.

Dot blot analysis of phospho-Nephrin antibody. 50ng of phos-peptide or nonphos-peptide per dot were spotted.



Description

Nephrin a member of the immunoglobulin family of cell adhesion molecules that functions in the glomerular filtration barrier in the kidney.

Application Notes

Titration of the phospho-Nephrin antibody may be required due to differences in protocols and secondary/substrate sensitivity.

Immunogen

This phospho-Nephrin antibody was produced from rabbits immunized with a KLH conjugated synthetic phosphopeptide corresponding to amino acid residues surrounding pY1210 of human Nephrin.

Storage

Aliquot the phospho-Nephrin antibody and store frozen at -20oC or colder. Avoid repeated freeze-thaw cycles.