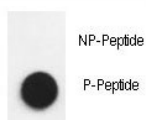


## Phospho-Nephrin Antibody (pY1193) (F48646)

Catalog No.	Formulation	Size
F48646-0.4ML	In 1X PBS, pH 7.4, with 0.09% sodium azide	0.4 ml
F48646-0.08ML	In 1X PBS, pH 7.4, with 0.09% sodium azide	0.08 ml

[Bulk quote request](#)

<b>Availability</b>	1-3 business days
<b>Species Reactivity</b>	Human
<b>Format</b>	Antigen affinity purified
<b>Host</b>	Rabbit
<b>Clonality</b>	Polyclonal (rabbit origin)
<b>Isotype</b>	Rabbit Ig
<b>Purity</b>	Antigen affinity
<b>UniProt</b>	O60500
<b>Applications</b>	Dot Blot : 1:500
<b>Limitations</b>	This phospho-Nephrin antibody is available for research use only.



Dot blot analysis of phospho-Nephrin antibody. 50ng of phos-peptide or nonphos-peptide per dot were spotted.

## Description

Nephrin a member of the immunoglobulin family of cell adhesion molecules that functions in the glomerular filtration barrier in the kidney. It primarily expressed in renal tissues, and the protein is a type-1 transmembrane protein found at the slit diaphragm of glomerular podocytes. The slit diaphragm is thought to function as an ultrafilter to exclude albumin and other plasma macromolecules in the formation of urine.

## Application Notes

Titration of the phospho-Nephrin antibody may be required due to differences in protocols and secondary/substrate

sensitivity.

## **Immunogen**

This phospho-Nephrin antibody was produced from rabbits immunized with a KLH conjugated synthetic phosphopeptide corresponding to amino acid residues surrounding pY1193 of human Nephrin.

## **Storage**

Aliquot the phospho-Nephrin antibody and store frozen at -20oC or colder. Avoid repeated freeze-thaw cycles.