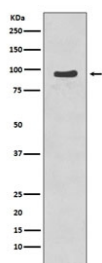


Phospho-NBS1 Antibody (pS343) [clone BGI-14] (RQ4768)

Catalog No.	Formulation	Size
RQ4768	Antibody in PBS with 0.02% sodium azide, 50% glycerol and 0.4-0.5mg/ml BSA	100 ul

[Bulk quote request](#)

Availability	1-2 weeks
Species Reactivity	Human
Format	Purified
Host	Rabbit
Clonality	Rabbit Monoclonal
Isotype	Rabbit IgG
Clone Name	BGI-14
Purity	Affinity purified
UniProt	O60934
Applications	Western Blot : 1:500-1:2000
Limitations	This phospho-NBS1 antibody is available for research use only.



Western blot testing of etoposide-treated human Jurkat cell lysate with phospho-NBS1 antibody. Predicted molecular weight ~95 kDa.

Description

Nijmegen breakage syndrome protein 1 (NBS1) is a component of the MRE11-RAD50-NBN (MRN complex) which plays a critical role in the cellular response to DNA damage and the maintenance of chromosome integrity. The complex is involved in double-strand break (DSB) repair, DNA recombination, maintenance of telomere integrity, cell cycle checkpoint control and meiosis. [UniProt]

Application Notes

Optimal dilution of the phospho-NBS1 antibody should be determined by the researcher.

Immunogen

A synthetic peptide specific to human NBS1 / NBN (surrounding pS343) was used as the immunogen for the phospho-NBS1 antibody.

Storage

Store the phospho-NBS1 antibody at -20oC.