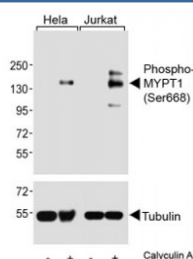


Phospho-MYPT1 Antibody (Ser668) (F54068)

| Catalog No. | Formulation | Size |
|---------------|--|---------|
| F54068-0.2ML | In 1X PBS, pH 7.4, with 0.09% sodium azide | 0.2 ml |
| F54068-0.05ML | In 1X PBS, pH 7.4, with 0.09% sodium azide | 0.05 ml |

Bulk quote request

| | |
|-----------------------------|---|
| Availability | 1-3 business days |
| Species Reactivity | Human |
| Predicted Reactivity | Chicken, Mouse, Rat |
| Format | Antigen affinity purified |
| Clonality | Polyclonal (rabbit origin) |
| Isotype | Rabbit Ig |
| Purity | Antigen affinity |
| UniProt | O14974 |
| Applications | Western Blot : 1:1000 |
| Limitations | This phospho-MYPT1 antibody is available for research use only. |



Western blot analysis of lysates from human HeLa and Jurkat cell lines, untreated or treated with Calyculin A (100nM), using phospho-MYPT1 antibody (upper) or Tubulin Ab (lower).

Description

Key regulator of protein phosphatase 1C (PPP1C). Mediates binding to myosin. As part of the PPP1C complex, involved in dephosphorylation of PLK1. Capable of inhibiting HIF1AN- dependent suppression of HIF1A activity. [UniProt]

Application Notes

The stated application concentrations are suggested starting points. Titration of the phospho-MYPT1 antibody may be required due to differences in protocols and secondary/substrate sensitivity.

Immunogen

Amino acids surrounding phosphorylated serine 668 from human MYPT1 were used as the immunogen for the phospho-MYPT1 antibody.

Storage

Aliquot the phospho-MYPT1 antibody and store frozen at -20oC or colder. Avoid repeated freeze-thaw cycles.