

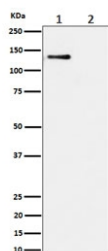
Phospho-Minichromosome maintenance 2 Antibody pS108 [clone 28M76] (RQ8513)

Catalog No.	Formulation	Size
RQ8513	Antibody in PBS with 0.02% sodium azide, 50% glycerol and 0.4-0.5mg/ml BSA	100 ul

Recombinant **RABBIT MONOCLONAL**

[Bulk quote request](#)

Availability	1-3 days
Species Reactivity	Human
Format	Purified
Clonality	Recombinant Rabbit Monoclonal
Isotype	Rabbit IgG
Clone Name	28M76
Purity	Affinity chromatography
UniProt	P49736
Applications	Western Blot : 1:500-1:2000
Limitations	This phospho-Minichromosome maintenance 2 antibody is available for research use only.



Western blot testing of lysate from 1) human HeLa cells and 2) human HeLa cells treated with alkaline phosphatase, using phospho-MCM2 antibody.

Description

Acts as a component of the MCM2-7 complex (MCM complex) which is the replicative helicase essential for 'once per cell cycle' DNA replication initiation and elongation in eukaryotic cells. Core component of CDC45-MCM-GINS (CMG) helicase, the molecular machine that unwinds template DNA during replication, and around which the replisome is built. [UniProt]

Application Notes

Optimal dilution of the phospho-Minichromosome maintenance 2 antibody should be determined by the researcher.

Immunogen

A synthetic peptide from the sequence surrounding phosphorylated serine 108 of human MCM2 protein was used as the immunogen for the phospho-Minichromosome maintenance 2 antibody.

Storage

Store the phospho-Minichromosome maintenance 2 antibody at -20oC.