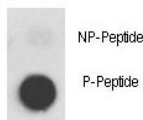


Phospho-MET Antibody (pY1356) (F48415)

Catalog No.	Formulation	Size
F48415-0.4ML	In 1X PBS, pH 7.4, with 0.09% sodium azide	0.4 ml
F48415-0.08ML	In 1X PBS, pH 7.4, with 0.09% sodium azide	0.08 ml

[Bulk quote request](#)

Availability	1-3 business days
Species Reactivity	Human
Format	Antigen affinity purified
Host	Rabbit
Clonality	Polyclonal (rabbit origin)
Isotype	Rabbit Ig
Purity	Antigen affinity
UniProt	P08581
Applications	Dot Blot : 1:500
Limitations	This phospho-MET antibody is available for research use only.



Dot blot analysis of phospho-MET antibody. 50ng of phos-peptide or nonphos-peptide per dot were spotted.

Description

The proto-oncogene MET product is the hepatocyte growth factor receptor and encodes tyrosine-kinase activity. The primary single chain precursor protein is post-translationally cleaved to produce the alpha and beta subunits, which are disulfide linked to form the mature receptor. Various mutations in the MET gene are associated with papillary renal carcinoma.

Application Notes

Titration of the phospho-MET antibody may be required due to differences in protocols and secondary/substrate

sensitivity.

Immunogen

This phospho-MET antibody was produced from rabbits immunized with a KLH conjugated synthetic phosphopeptide corresponding to amino acid residues surrounding pY1356 of human MET.

Storage

Aliquot the phospho-MET antibody and store frozen at -20oC or colder. Avoid repeated freeze-thaw cycles.