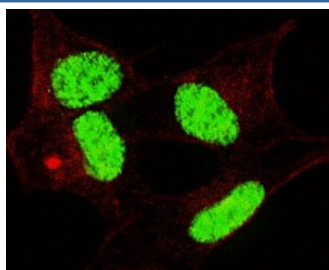


Phospho-LIN28 Antibody / LIN28A (pS134) (F48636)

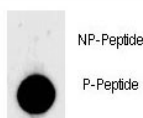
Catalog No.	Formulation	Size
F48636-0.4ML	In 1X PBS, pH 7.4, with 0.09% sodium azide	0.4 ml
F48636-0.08ML	In 1X PBS, pH 7.4, with 0.09% sodium azide	0.08 ml

[Bulk quote request](#)

Availability	1-3 business days
Species Reactivity	Human
Format	Antigen affinity purified
Host	Rabbit
Clonality	Polyclonal (rabbit origin)
Isotype	Rabbit Ig
Purity	Antigen affinity
UniProt	Q9H9Z2
Applications	Immunofluorescence : 1:100 Dot Blot : 1:500
Limitations	This phospho-LIN28 antibody is available for research use only.



Fluorescent confocal image of SY5Y cells stained with phospho-LIN28 antibody. Alexa Fluor 488 conjugated secondary (green) was used. Nuclei were counterstained with Hoechst 33342 (blue). Note the highly specific localization of the immunosignal to the nucleus.



Dot blot analysis of phospho-LIN28 antibody. 50ng of phos-peptide or nonphos-peptide per dot were spotted.

Description

LIN28 is probable transcription factor. It plays a critical role in the control of immune response.

Application Notes

Titration of the phospho-LIN28 antibody may be required due to differences in protocols and secondary/substrate sensitivity.

Immunogen

This phospho-LIN28 antibody was produced from rabbits immunized with a KLH conjugated synthetic phosphopeptide corresponding to amino acid residues surrounding pS134 of human LIN28.

Storage

Aliquot the phospho-LIN28 antibody and store frozen at -20oC or colder. Avoid repeated freeze-thaw cycles.