

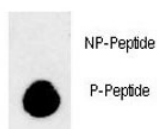
Phospho-LC3B Antibody (pT93/Y99) (F48639)

Catalog No.	Formulation	Size
F48639-0.4ML	In 1X PBS, pH 7.4, with 0.09% sodium azide	0.4 ml
F48639-0.08ML	In 1X PBS, pH 7.4, with 0.09% sodium azide	0.08 ml

[Bulk quote request](#)

Availability	1-3 business days
Species Reactivity	Human
Format	Antigen affinity purified
Host	Rabbit
Clonality	Polyclonal (rabbit origin)
Isotype	Rabbit Ig
Purity	Antigen affinity
UniProt	Q9GZQ8
Applications	Dot Blot : 1:500
Limitations	This phospho-LC3B antibody is available for research use only.

Dot blot analysis of phospho-LC3B antibody. 50ng of phos-peptide or nonphos-peptide per dot were spotted.



Description

The product of this gene is a subunit of neuronal microtubule-associated MAP1A and MAP1B proteins, which are involved in microtubule assembly and important for neurogenesis. Studies on the rat homolog implicate a role for this gene in autophagy, a process that involves the bulk degradation of cytoplasmic component.

Application Notes

Titration of the phospho-LC3B antibody may be required due to differences in protocols and secondary/substrate sensitivity.

Immunogen

This phospho-LC3B antibody was produced from rabbits immunized with a KLH conjugated synthetic phosphopeptide corresponding to amino acid residues surrounding pT93/Y99 of human MAP1LC3B.

Storage

Aliquot the phospho-LC3B antibody and store frozen at -20oC or colder. Avoid repeated freeze-thaw cycles.