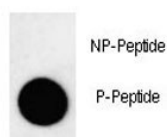


## Phospho-LC3B Antibody (pT29) (F48644)

Catalog No.	Formulation	Size
F48644-0.4ML	In 1X PBS, pH 7.4, with 0.09% sodium azide	0.4 ml
F48644-0.08ML	In 1X PBS, pH 7.4, with 0.09% sodium azide	0.08 ml

[Bulk quote request](#)

<b>Availability</b>	1-3 business days
<b>Species Reactivity</b>	Human
<b>Predicted Reactivity</b>	Bovine, Mouse, Rat
<b>Format</b>	Antigen affinity purified
<b>Host</b>	Rabbit
<b>Clonality</b>	Polyclonal (rabbit origin)
<b>Isotype</b>	Rabbit Ig
<b>Purity</b>	Antigen affinity
<b>UniProt</b>	Q9GZQ8
<b>Applications</b>	Dot Blot : 1:500
<b>Limitations</b>	This phospho-LC3B antibody is available for research use only.



Dot blot analysis of phospho-LC3B antibody. 50ng of phos-peptide or nonphos-peptide per dot were spotted.

## Description

The product of this gene is a subunit of neuronal microtubule-associated MAP1A and MAP1B proteins, which are involved in microtubule assembly and important for neurogenesis. Studies on the rat homolog implicate a role for this gene in autophagy, a process that involves the bulk degradation of cytoplasmic component.

## Application Notes

Titration of the phospho-LC3B antibody may be required due to differences in protocols and secondary/substrate sensitivity.

## Immunogen

This phospho-LC3B antibody was produced from rabbits immunized with a KLH conjugated synthetic phosphopeptide corresponding to amino acid residues surrounding pT29 of human MAP1LC3B.

## Storage

Aliquot the phospho-LC3B antibody and store frozen at -20oC or colder. Avoid repeated freeze-thaw cycles.