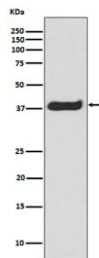


Phospho-LAT Antibody [clone AOH-12] (RQ4743)

Catalog No.	Formulation	Size
RQ4743	Antibody in PBS with 0.02% sodium azide, 50% glycerol and 0.4-0.5mg/ml BSA	100 ul

[Bulk quote request](#)

Availability	1-2 weeks
Species Reactivity	Human
Format	Purified
Host	Rabbit
Clonality	Rabbit Monoclonal
Isotype	Rabbit IgG
Clone Name	AOH-12
Purity	Affinity purified
UniProt	O43561
Applications	Western Blot : 1:500-1:2000
Limitations	This phospho-LAT antibody is available for research use only.



Western blot testing of human Jurkat lysate with phospho-LAT antibody. Expected molecular weight: 36-38 kDa.

Description

Linker for activation of T-cells family member 1 (LAT) is required for TCR (T-cell antigen receptor)- and pre-TCR-mediated signaling, both in mature T-cells and during their development. [UniProt]

Application Notes

Optimal dilution of the phospho-LAT antibody should be determined by the researcher.

Immunogen

A synthetic peptide specific to human LAT (surrounding pY191) was used as the immunogen for the phospho-LAT antibody.

Storage

Store the phospho-LAT antibody at -20°C.