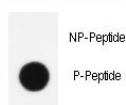


Phospho-KLF4 Antibody (pS245) (F48604)

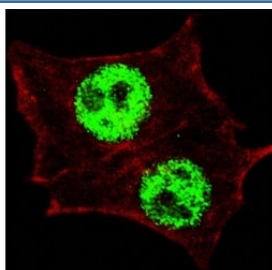
Catalog No.	Formulation	Size
F48604-0.4ML	In 1X PBS, pH 7.4, with 0.09% sodium azide	0.4 ml
F48604-0.08ML	In 1X PBS, pH 7.4, with 0.09% sodium azide	0.08 ml

[Bulk quote request](#)

Availability	1-3 business days
Species Reactivity	Human
Predicted Reactivity	Mouse
Format	Antigen affinity purified
Host	Rabbit
Clonality	Polyclonal (rabbit origin)
Isotype	Rabbit Ig
Purity	Antigen affinity
UniProt	O43474
Applications	Immunofluorescence : 1:10-1:50 Dot Blot : 1:500
Limitations	This phospho-KLF4 antibody is available for research use only.



Dot blot analysis of phospho-KLF4 antibody. 50ng of phos-peptide or nonphos-peptide per dot were spotted.



Fluorescent confocal image of HeLa cells stained with phospho-KLF4 antibody at 1:200. Note the highly specific localization of the phosphorylated KLF4 immunoreactivity to the nuclei but not the nucleoli or the cytoplasm.

Description

Krueppel-like factor family members are involved in growth regulation and a wide range of developmental processes. KLF4 is highly expressed in epithelial tissues including skin and stomach/intestine. Studies have shown that it can function as both an oncogene, upregulating hSSC, and a tumor suppressor, down-regulating colorectal cancer.

Application Notes

Titration of the phospho-KLF4 antibody may be required due to differences in protocols and secondary/substrate sensitivity.

Immunogen

This phospho-KLF4 antibody was produced from rabbits immunized with a KLH conjugated synthetic phosphopeptide corresponding to amino acid residues surrounding pS245 of human KLF4.

Storage

Aliquot the phospho-KLF4 antibody and store frozen at -20oC or colder. Avoid repeated freeze-thaw cycles.