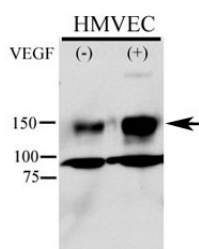


## Phospho-KDR Antibody / VEGFR2 (pY996) (F48399)

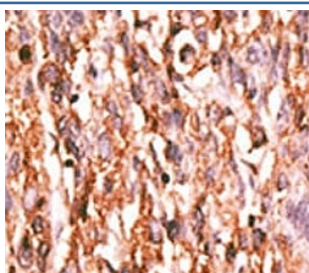
Catalog No.	Formulation	Size
F48399-0.4ML	In 1X PBS, pH 7.4, with 0.09% sodium azide	0.4 ml
F48399-0.08ML	In 1X PBS, pH 7.4, with 0.09% sodium azide	0.08 ml

**Bulk quote request**

<b>Availability</b>	1-3 business days
<b>Species Reactivity</b>	Human
<b>Format</b>	Antigen affinity purified
<b>Clonality</b>	Polyclonal (rabbit origin)
<b>Isotype</b>	Rabbit Ig
<b>Purity</b>	Antigen affinity
<b>UniProt</b>	P35968
<b>Localization</b>	Cytoplasmic and cell surface
<b>Applications</b>	Western Blot : 1:1000 IHC (Paraffin) : 1:50-1:100
<b>Limitations</b>	This phospho-KDR antibody is available for research use only.



Phospho-KDR antibody used in western blot to detect phosphorylated KDR/FLK1 in HMVEC lysate. Endothelial cells were stimulated with 50ug/ml VEGF for 5min and Ab used at 1:500. Predicted molecular weight: ~152 (immature), 180-200 kDa (intermediate) and 220-230 kDa (mature).



IHC analysis of FFPE human hepatocarcinoma tissue stained with the phospho-KDR antibody.

## Description

KDR (FLK1) is a receptor for VEGF or VEGFC. This protein has a tyrosine-protein kinase activity. The VEGF-kinase ligand/receptor signaling system plays a key role in vascular development and regulation of vascular permeability.

## Application Notes

Titration of the phospho-KDR antibody may be required due to differences in protocols and secondary/substrate sensitivity.

## Immunogen

This phospho-KDR antibody was produced from rabbits immunized with a KLH conjugated synthetic phosphopeptide corresponding to amino acid residues surrounding pY996 of human KDR/FLK1.

## Storage

Aliquot the phospho-KDR antibody and store frozen at -20oC or colder. Avoid repeated freeze-thaw cycles.