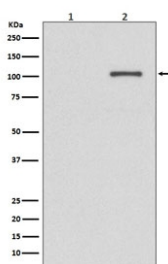


Phospho-IRE1 Antibody (pS724) [clone EGH-5] (RQ4781)

Catalog No.	Formulation	Size
RQ4781	Antibody in PBS with 0.02% sodium azide, 50% glycerol and 0.4-0.5mg/ml BSA	100 ul

[Bulk quote request](#)

Availability	1-2 weeks
Species Reactivity	Human
Format	Purified
Clonality	Rabbit Monoclonal
Isotype	Rabbit IgG
Clone Name	EGH-5
Purity	Affinity purified
UniProt	O75460
Applications	Western Blot : 1:500-1:2000
Limitations	This phospho-IRE1 antibody is available for research use only.



Western blot testing of lysate from 1) untreated and 2) AP-treated human K562 cells with phospho-IRE1 antibody. Predicted molecular weight ~110 kDa.

Description

IRE1 is a serine/threonine-protein kinase and endoribonuclease that acts as a key sensor for the endoplasmic reticulum unfolded protein response (UPR). In unstressed cells, the ER luminal domain is maintained in its inactive monomeric state by binding to the ER chaperone HSPA5/BiP. Accumulation of misfolded protein in the ER causes release of HSPA5/BiP, allowing the luminal domain to homodimerize, promoting autophosphorylation of the kinase domain and subsequent activation of the endoribonuclease activity. [UniProt]

Application Notes

Optimal dilution of the phospho-IRE1 antibody should be determined by the researcher.

Immunogen

A synthetic peptide specific to human IRE1 / ERN1 (surrounding pS724) was used as the immunogen for the phospho-IRE1 antibody.

Storage

Store the phospho-IRE1 antibody at -20oC.