

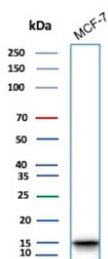
Phospho-Histone H3 Antibody (pS10) [clone rPHH3/6824] (V9213)

Catalog No.	Formulation	Size
V9213-100UG	0.2 mg/ml in 1X PBS with 0.1 mg/ml BSA (US sourced), 0.05% sodium azide	100 ug
V9213-20UG	0.2 mg/ml in 1X PBS with 0.1 mg/ml BSA (US sourced), 0.05% sodium azide	20 ug
V9213SAF-100UG	1 mg/ml in 1X PBS; BSA free, sodium azide free	100 ug

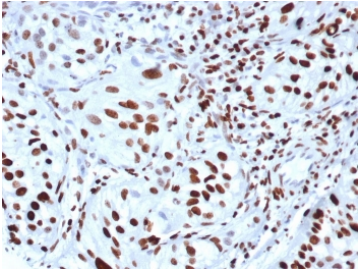
Recombinant **MOUSE MONOCLONAL**

[Bulk quote request](#)

Availability	1-3 business days
Species Reactivity	Human
Format	Purified
Host	Mouse
Clonality	Recombinant Mouse Monoclonal
Isotype	Mouse IgG1, kappa
Clone Name	rPHH3/6824
Purity	Protein A/G affinity
UniProt	P68431
Localization	Nucleus, Chromosome
Applications	Immunohistochemistry (FFPE) : 1-2ug/ml Western Blot : 2-4ug/ml
Limitations	This phospho-Histone H3 antibody is available for research use only.



Western blot testing of human MCF7 cell lysate with phospho-Histone H3 antibody.



IHC staining of FFPE human bladder tissue with phospho-Histone H3 antibody (clone rPHH3/6824). HIER: boil tissue sections in pH 9 10mM Tris with 1mM EDTA for 20 min and allow to cool before testing.

Description

Phospho-Histone H3 Antibody (pS10) detects Phosphohistone H3 (PHH3), a marker specific for cells undergoing mitosis. Serine 10 of Histone H3 is phosphorylated in association with mitotic chromatin condensation in late G2 and M phase of the cell cycle and thus, PHH3 can distinguish mitosis from apoptotic nuclei. The range of percentage PHH3 positive tumor nuclei was from 0.0 to 6.6% (median value 0.8%). Increased expression of PHH3 was significantly associated with tumor thickness ($p = 0.031$), presence of tumor ulceration ($p = 0.041$) and tumor necrosis ($p = 0.027$), but not with Clarks level of invasion. High levels of PHH3 was associated with increased mitotic count ($p = 0.003$) and high Ki-67 expression ($p = 0.002$). For central nervous system tumors, melanoma, soft tissue tumors, GIST, etc., PHH3 mAb is helpful for tumor pathological classification and prognosis. This antibody is part of a broader collection of [Histone H3 antibodies](#) used to study chromatin structure, histone modifications, and epigenetic regulation.

Application Notes

Optimal dilution of the phospho-Histone H3 antibody should be determined by the researcher.

Immunogen

Amino acids ARK(pS)TGGKAPRKQLc) were used as the immunogen for the phospho-Histone H3 antibody.

Storage

Aliquot the phospho-Histone H3 antibody and store frozen at -20°C or colder. Avoid repeated freeze-thaw cycles.