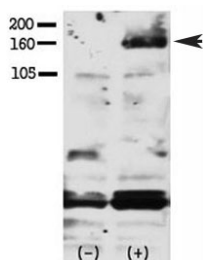


## Phospho-HER4/ERBB4 Antibody (pY1188) (F48404)

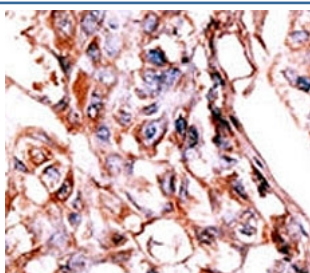
| Catalog No.   | Formulation                                | Size    |
|---------------|--|---------|
| F48404-0.4ML  | In 1X PBS, pH 7.4, with 0.09% sodium azide | 0.4 ml  |
| F48404-0.08ML | In 1X PBS, pH 7.4, with 0.09% sodium azide | 0.08 ml |

[Bulk quote request](#)

|                           |  |
|---------------------------|--|
| <b>Availability</b>       | 1-3 business days  |
| <b>Species Reactivity</b> | Human  |
| <b>Format</b>             | Antigen affinity purified                                      |
| <b>Host</b>               | Rabbit   |
| <b>Clonality</b>          | Polyclonal (rabbit origin)                                     |
| <b>Isotype</b>            | Rabbit Ig  |
| <b>Purity</b>             | Antigen affinity   |
| <b>UniProt</b>            | Q15303   |
| <b>Applications</b>       | Western Blot : 1:1000<br>IHC (Paraffin) : 1:50-1:100           |
| <b>Limitations</b>        | This phospho-HER4 antibody is available for research use only. |



Western blot testing of phospho-HER4 antibody and FG pancreatic carcinoma cells treated with or without EGF (50ng/ml) for 15 min. Ab was used at 1:750. Data and protocol kindly provided by Dr. Weis of Cheresch Lab, UCSD.



IHC analysis of FFPE human hepatocarcinoma tissue stained with the phospho-HER4 antibody.

## Description

The HER4/ERBB4 gene is a member of the type I receptor tyrosine kinase subfamily that includes EGFR, ERBB2, and ERBB3. It encodes a receptor for NDF/heregulin.

## Application Notes

Titration of the phospho-HER4 antibody may be required due to differences in protocols and secondary/substrate sensitivity.

## Immunogen

This phospho-HER4 antibody was produced from rabbits immunized with a KLH conjugated synthetic phosphopeptide corresponding to amino acid residues surrounding pY1188 of human HER4.

## Storage

Aliquot the phospho-HER4 antibody and store frozen at -20oC or colder. Avoid repeated freeze-thaw cycles.