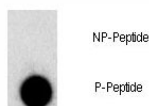


## Phospho-FGFR1 Antibody (pY307) (F48477)

Catalog No.	Formulation	Size
F48477-0.4ML	In 1X PBS, pH 7.4, with 0.09% sodium azide	0.4 ml
F48477-0.08ML	In 1X PBS, pH 7.4, with 0.09% sodium azide	0.08 ml

[Bulk quote request](#)

<b>Availability</b>	1-3 business days
<b>Species Reactivity</b>	Human
<b>Predicted Reactivity</b>	Chicken, Mouse
<b>Format</b>	Antigen affinity purified
<b>Host</b>	Rabbit
<b>Clonality</b>	Polyclonal (rabbit origin)
<b>Isotype</b>	Rabbit Ig
<b>Purity</b>	Antigen affinity
<b>UniProt</b>	P11362
<b>Applications</b>	Dot Blot : 1:500
<b>Limitations</b>	This phospho-FGFR1 antibody is available for research use only.



NP-Peptide  
P-Peptide

Dot blot analysis of phospho-FGFR1 antibody. 50ng of phos-peptide or nonphos-peptide per dot were spotted. P-Pab=phos-Ab; P-Peptide=phos-peptide; NP-Peptide=nonphos-peptide.

## Description

FGFR1 is a member of the fibroblast growth factor receptor (FGFR) family, where amino acid sequence is highly conserved between members and throughout evolution. FGFR family members differ from one another in their ligand affinities and tissue distribution. A full-length representative protein consists of an extracellular region, composed of three immunoglobulin-like domains, a single hydrophobic membrane-spanning segment and a cytoplasmic tyrosine kinase domain. The extracellular portion of the protein interacts with fibroblast growth factors, setting in motion a cascade of

downstream signals, ultimately influencing mitogenesis and differentiation. This particular family member binds both acidic and basic fibroblast growth factors and is involved in limb induction. Mutations in this gene have been associated with Pfeiffer syndrome, Jackson-Weiss syndrome, Antley-Bixler syndrome, osteoglophonic dysplasia, and autosomal dominant Kallmann syndrome 2. Chromosomal aberrations involving this gene are associated with stem cell myeloproliferative disorder and stem cell leukemia lymphoma syndrome.

## Application Notes

Titration of the phospho-FGFR1 antibody may be required due to differences in protocols and secondary/substrate sensitivity.

## Immunogen

This phospho-FGFR1 antibody was produced from rabbits immunized with a KLH conjugated synthetic phosphopeptide corresponding to amino acid residues surrounding pY307 of human FGFR1.

## Storage

Aliquot the phospho-FGFR1 antibody and store frozen at -20oC or colder. Avoid repeated freeze-thaw cycles.