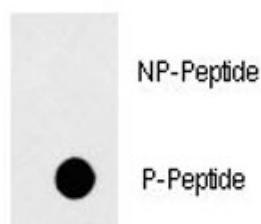


## Phospho-Fas Antibody (pY291) (F48476)

Catalog No.	Formulation	Size
F48476-0.4ML	In 1X PBS, pH 7.4, with 0.09% sodium azide	0.4 ml
F48476-0.08ML	In 1X PBS, pH 7.4, with 0.09% sodium azide	0.08 ml

**Bulk quote request**

<b>Availability</b>	1-3 business days
<b>Species Reactivity</b>	Human
<b>Format</b>	Antigen affinity purified
<b>Clonality</b>	Polyclonal (rabbit origin)
<b>Isotype</b>	Rabbit Ig
<b>Purity</b>	Antigen affinity
<b>UniProt</b>	P25445
<b>Applications</b>	Dot Blot : 1:500
<b>Limitations</b>	This phospho-Fas antibody is available for research use only.



Dot blot analysis of phospho-Fas antibody. 50ng of phos-peptide or nonphos-peptide per dot were spotted. P-Pab=phos-Ab; P-Peptide=phos-peptide; NP-Peptide=nonphos-peptide.

## Description

Receptor for TNFSF6/FASLG. The adapter molecule FADD recruits caspase-8 to the activated receptor. The resulting death-inducing signaling complex (DISC) performs caspase-8 proteolytic activation which initiates the subsequent cascade of caspases (aspartate-specific cysteine proteases) mediating apoptosis. Fas-mediated apoptosis may have a role in the induction of peripheral tolerance, in the antigen-stimulated suicide of mature T-cells, or both. The secreted isoforms 2 to 6 block apoptosis (in vitro). [UniProt]

## Application Notes

Titration of the phospho-Fas antibody may be required due to differences in protocols and secondary/substrate sensitivity.

## Immunogen

This phospho-Fas antibody was produced from rabbits immunized with a KLH conjugated synthetic phosphopeptide corresponding to amino acid residues surrounding pY291 of human Fas.

## Storage

Aliquot the phospho-Fas antibody and store frozen at -20oC or colder. Avoid repeated freeze-thaw cycles.