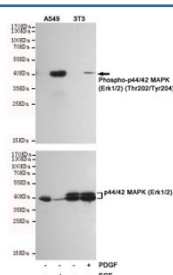


Phospho-ERK1/2 Antibody (Thr202/Tyr204) [clone 2E8-2F6-C12] (F54044)

Catalog No.	Formulation	Size
F54044-0.1ML	In PBS with 50% glycerol and 0.03% ProClin 300	0.1 ml

[Bulk quote request](#)

Availability	1-3 business days
Species Reactivity	Human, Mouse
Format	Purified
Host	Mouse
Clonality	Monoclonal (mouse origin)
Isotype	Mouse IgG1
Clone Name	2E8-2F6-C12
Purity	Protein G affinity
UniProt	P27361, P28482
Applications	Western Blot : 1:500
Limitations	This phospho-ERK1/2 antibody is available for research use only.



Western blot testing of EGF-treated and untreated A549 cells and PDGF-treated and untreated NIH3T3 cells using phospho-ERK1/2 antibody at 1:500 (upper) and a non-phospho-specific ERK1/2 antibody at 1:500 (lower).

Description

Serine/threonine kinase which acts as an essential component of the MAP kinase signal transduction pathway. MAPK1/ERK2 and MAPK3/ERK1 are the 2 MAPKs which play an important role in the MAPK/ERK cascade. They participate also in a signaling cascade initiated by activated KIT and KITLG/SCF. Depending on the cellular context, the MAPK/ERK cascade mediates diverse biological functions such as cell growth, adhesion, survival and differentiation through the regulation of transcription, translation, cytoskeletal rearrangements.

Application Notes

The stated application concentrations are suggested starting points. Titration of the phospho-ERK1/2 antibody may be required due to differences in protocols and secondary/substrate sensitivity.

Immunogen

A synthetic peptide corresponding to the amino acids surrounding pThr202 and pTyr204 of human ERK1/2 was used as the immunogen for this phospho-ERK1/2 antibody.

Storage

Store the phospho-ERK1/2 antibody at -20°C.