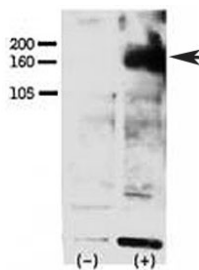


## Phospho-ERBB4 Antibody (pY1162) (F48403)

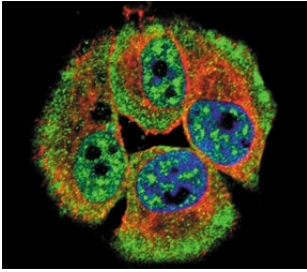
Catalog No.	Formulation	Size
F48403-0.4ML	In 1X PBS, pH 7.4, with 0.09% sodium azide	0.4 ml
F48403-0.08ML	In 1X PBS, pH 7.4, with 0.09% sodium azide	0.08 ml

[Bulk quote request](#)

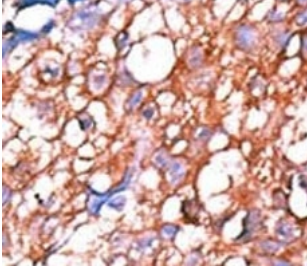
<b>Availability</b>	1-3 business days
<b>Species Reactivity</b>	Human
<b>Predicted Reactivity</b>	Mouse, Rat
<b>Format</b>	Antigen affinity purified
<b>Host</b>	Rabbit
<b>Clonality</b>	Polyclonal (rabbit origin)
<b>Isotype</b>	Rabbit Ig
<b>Purity</b>	Antigen affinity
<b>UniProt</b>	Q15303
<b>Applications</b>	Western Blot : 1:1000 IHC (Paraffin) : 1:50-1:100 Immunofluorescence : 1:10-1:50
<b>Limitations</b>	This phospho-ERBB4 antibody is available for research use only.



Western blot testing of phospho-ERBB4 antibody and FG pancreatic carcinoma cells treated with or without EGF (50ng/ml) for 15 min. Ab was used at 1:750. Data and protocol kindly provided by Dr. Weis of Cheresch Lab, UCSD.



Confocal immunofluorescent analysis of phospho-ERBB4 antibody with MCF-7 cells followed by Alexa Fluor 488-conjugated goat anti-rabbit IgG (green). Actin filaments have been labeled with Alexa Fluor 555 Phalloidin (red). DAPI was used as a nuclear counterstain (blue).



IHC analysis of FFPE human hepatocarcinoma tissue stained with the phospho-ERBB4 antibody.

## Description

HER4/ERBB4 is a member of the type I receptor tyrosine kinase subfamily that includes EGFR, ERBB2 and ERBB3. It is a receptor for NDF/heregulin.

## Application Notes

Titration of the phospho-ERBB4 antibody may be required due to differences in protocols and secondary/substrate sensitivity.

## Immunogen

This phospho-ERBB4 antibody was produced from rabbits immunized with a KLH conjugated synthetic phosphopeptide corresponding to amino acid residues surrounding pY1162 of human ERBB4.

## Storage

Aliquot the phospho-ERBB4 antibody and store frozen at -20°C or colder. Avoid repeated freeze-thaw cycles.