

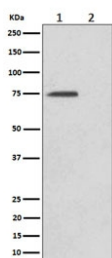
## Phospho-eIF4B Antibody (pS406) [clone 29E04] (RQ8762)

Catalog No.	Formulation	Size
RQ8762	Antibody in PBS with 0.02% sodium azide, 50% glycerol and 0.4-0.5mg/ml BSA	100 ul

Recombinant **RABBIT MONOCLONAL**

[Bulk quote request](#)

Availability	1-3 days
Species Reactivity	Human
Format	Purified
Host	Rabbit
Clonality	Recombinant Rabbit Monoclonal
Isotype	Rabbit IgG
Clone Name	29E04
Purity	Affinity chromatography
UniProt	P23588
Applications	Western Blot : 1:500-1:2000
Limitations	This Phospho-eIF4B antibody is available for research use only.



Western blot testing of lysate from human HeLa cells, untreated (1) or treated with Alkaline phosphatase (2), using Phospho-eIF4B antibody.

## Description

Eukaryotic translation initiation factor 4B is required for the binding of mRNA to ribosomes. [UniProt]

## Application Notes

Optimal dilution of the Phospho-eIF4B antibody should be determined by the researcher.

## Immunogen

A synthetic peptide specific to the region of human eIF4B protein surrounding phosphorylated serine 406 was used as the immunogen for the Phospho-eIF4B antibody.

## Storage

Store the Phospho-eIF4B antibody at -20oC.