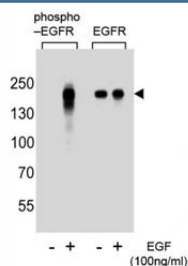


Phospho-EGFR Antibody (pY1172) (F48508)

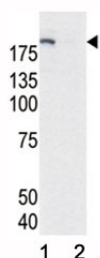
Catalog No.	Formulation	Size
F48508-0.4ML	In 1X PBS, pH 7.4, with 0.09% sodium azide	0.4 ml
F48508-0.08ML	In 1X PBS, pH 7.4, with 0.09% sodium azide	0.08 ml

Bulk quote request

Availability	1-3 business days
Species Reactivity	Human
Format	Antigen affinity purified
Clonality	Polyclonal (rabbit origin)
Isotype	Rabbit Ig
Purity	Antigen affinity
UniProt	P00533
Applications	Dot Blot : 1:500 Western Blot : 1:1000
Limitations	This phospho-EGFR antibody is available for research use only.

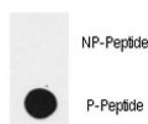


Western blot analysis of extracts from A431 cells, untreated or treated with EGF, using phospho-EGFR antibody (left) or nonphos Ab (right)

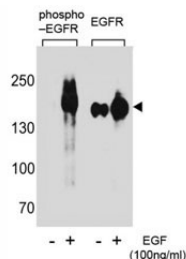


Western blot analysis of phospho-EGFR antibody and HeLa cell lysate, either induced (Lane 1) or noninduced with EGF (2).

Dot blot analysis of phospho-EGFR antibody. 50ng of phos-peptide or nonphos-peptide per dot were spotted.



Western blot analysis of extracts from A431 cells, untreated or treated with EGF using phospho-EGFR antibody (left) or nonphos Ab (right).



Description

Epidermal Growth factor receptor (EGFR) is the prototype member of the type 1 receptor tyrosine kinases. EGFR overexpression in tumors indicates poor prognosis and is observed in tumors of the head and neck, brain, bladder, stomach, breast, lung, endometrium, cervix, vulva, ovary, esophagus, stomach and in squamous cell carcinoma. EGFR is a receptor for EGF, but also for other members of the EGF family, including TGF- α , amphiregulin, betacellulin, heparin-binding EGF-like growth factor, GP30 and vaccinia virus growth factor. Is involved in the control of cell growth and differentiation.

Application Notes

Titration of the phospho-EGFR antibody may be required due to differences in protocols and secondary/substrate sensitivity.

Immunogen

This phospho-EGFR antibody was produced from rabbits immunized with a KLH conjugated synthetic phosphopeptide corresponding to amino acid residues surrounding pY1172 of human EGFR.

Storage

Aliquot the phospho-EGFR antibody and store frozen at -20°C or colder. Avoid repeated freeze-thaw cycles.