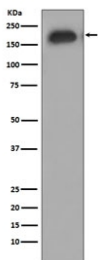


Phospho-EGFR Antibody (pY1092) [clone BFO-5] (RQ4842)

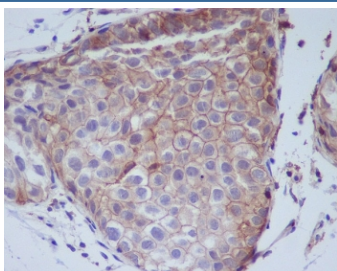
| Catalog No. | Formulation | Size |
|-------------|--|--------|
| RQ4842 | Antibody in PBS with 0.02% sodium azide, 50% glycerol and 0.4-0.5mg/ml BSA | 100 ul |

[Bulk quote request](#)

| | |
|--------------------|---|
| Availability | 1-2 weeks |
| Species Reactivity | Human |
| Format | Purified |
| Clonality | Rabbit Monoclonal |
| Isotype | Rabbit IgG |
| Clone Name | BFO-5 |
| Purity | Affinity purified |
| UniProt | P00533 |
| Localization | Cell surface |
| Applications | Western Blot : 1:500-1:2000 Immunohistochemistry (FFPE) : 1:50-1:200 |
| Limitations | This phospho-EGFR antibody is available for research use only. |



Western blot testing of lysate from HUVEC cells treated with EGF, with phospho-EGFR antibody. Expected molecular weight: 134-170 kDa depending on glycosylation level.



IHC staining of FFPE human breast cancer with phospho-EGFR antibody. HIER: boil tissue sections in pH6, 10mM citrate buffer, for 10-20 min and allow to cool before testing.

Description

EGFR is a receptor tyrosine kinase. Receptor for epidermal growth factor (EGF) and related growth factors including TGF- α , amphiregulin, betacellulin, heparin-binding EGF-like growth factor, GP30 and vaccinia virus growth factor. Is involved in the control of cell growth and differentiation.

Application Notes

Optimal dilution of the phospho-EGFR antibody should be determined by the researcher.

Immunogen

A synthetic peptide specific to human EGFR (surrounding pY1092) was used as the immunogen for the phospho-EGFR antibody.

Storage

Store the phospho-EGFR antibody at -20°C.