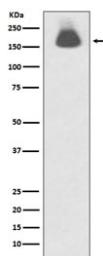


Phospho-EGFR Antibody (pS695) [clone GCC-5] (RQ4839)

Catalog No.	Formulation	Size
RQ4839	Antibody in PBS with 0.02% sodium azide, 50% glycerol and 0.4-0.5mg/ml BSA	100 ul

[Bulk quote request](#)

Availability	1-2 weeks
Species Reactivity	Human
Format	Purified
Host	Rabbit
Clonality	Rabbit Monoclonal
Isotype	Rabbit IgG
Clone Name	GCC-5
Purity	Affinity purified
UniProt	P00533
Applications	Western Blot : 1:1000-1:2000
Limitations	This phospho-EGFR antibody is available for research use only.



Western blot testing of lysate from human A431 cells treated with EGF with phospho-EGFR antibody. Expected molecular weight: 134-170 kDa depending on glycosylation level.

Description

EGFR is a receptor tyrosine kinase. Receptor for epidermal growth factor (EGF) and related growth factors including TGF- α , amphiregulin, betacellulin, heparin-binding EGF-like growth factor, GP30 and vaccinia virus growth factor. Is involved in the control of cell growth and differentiation.

Explore our [EGFR Antibody \(31G7\)](#) page for a broader view of EGFR expression and extensively validated antibody performance across applications.

Application Notes

Optimal dilution of the phospho-EGFR antibody should be determined by the researcher.

Immunogen

A synthetic peptide specific to human EGFR (surrounding pS695) was used as the immunogen for the phospho-EGFR antibody.

Storage

Store the phospho-EGFR antibody at -20oC.