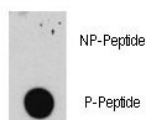


Phospho-E2F1 Antibody (pS332) (F48544)

Catalog No.	Formulation	Size
F48544-0.4ML	In 1X PBS, pH 7.4, with 0.09% sodium azide	0.4 ml
F48544-0.08ML	In 1X PBS, pH 7.4, with 0.09% sodium azide	0.08 ml

[Bulk quote request](#)

Availability	1-3 business days
Species Reactivity	Human
Format	Antigen affinity purified
Host	Rabbit
Clonality	Polyclonal (rabbit origin)
Isotype	Rabbit Ig
Purity	Antigen affinity
UniProt	Q01094
Applications	Dot Blot : 1:500
Limitations	This phospho-E2F1 antibody is available for research use only.



Dot blot analysis of phospho-E2F1 antibody. 50ng of phos-peptide or nonphos-peptide per dot were spotted.

Description

E2F1 is a member of the E2F family of transcription factors. It binds preferentially to retinoblastoma protein pRB in a cell-cycle dependent manner. It can mediate both cell proliferation and p53-dependent/independent apoptosis.

Application Notes

Titration of the phospho-E2F1 antibody may be required due to differences in protocols and secondary/substrate sensitivity.

Immunogen

This phospho-E2F1 antibody was produced from rabbits immunized with a KLH conjugated synthetic phosphopeptide corresponding to amino acid residues surrounding pS332 of human E2F1.

Storage

Aliquot the phospho-E2F1 antibody and store frozen at -20oC or colder. Avoid repeated freeze-thaw cycles.