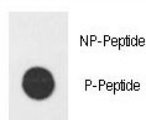


## Phospho-E2F1 Antibody (pH357) (F48621)

Catalog No.	Formulation	Size
F48621-0.4ML	In 1X PBS, pH 7.4, with 0.09% sodium azide	0.4 ml
F48621-0.08ML	In 1X PBS, pH 7.4, with 0.09% sodium azide	0.08 ml

[Bulk quote request](#)

<b>Availability</b>	1-3 business days
<b>Species Reactivity</b>	Human
<b>Format</b>	Antigen affinity purified
<b>Host</b>	Rabbit
<b>Clonality</b>	Polyclonal (rabbit origin)
<b>Isotype</b>	Rabbit Ig
<b>Purity</b>	Antigen affinity
<b>UniProt</b>	Q01094
<b>Applications</b>	Dot Blot : 1:500
<b>Limitations</b>	This phospho-E2F1 antibody is available for research use only.



Dot blot analysis of phospho-E2F1 antibody. 50ng of phos-peptide or nonphos-peptide per dot were spotted.

## Description

The protein encoded by this gene is a member of the E2F family of transcription factors. The E2F family plays a crucial role in the control of cell cycle and action of tumor suppressor proteins and is also a target of the transforming proteins of small DNA tumor viruses.

## Application Notes

Titration of the phospho-E2F1 antibody may be required due to differences in protocols and secondary/substrate sensitivity.

## Immunogen

This phospho-E2F1 antibody was produced from rabbits immunized with a KLH conjugated synthetic phosphopeptide corresponding to amino acid residues surrounding pT357 of human E2F1.

## Storage

Aliquot the phospho-E2F1 antibody and store frozen at -20°C or colder. Avoid repeated freeze-thaw cycles.