

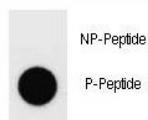
Phospho-Dnmt1 Antibody (pS1105) (F48686)

| Catalog No. | Formulation | Size |
|---------------|--|---------|
| F48686-0.4ML | In 1X PBS, pH 7.4, with 0.09% sodium azide | 0.4 ml |
| F48686-0.08ML | In 1X PBS, pH 7.4, with 0.09% sodium azide | 0.08 ml |

[Bulk quote request](#)

| | |
|-----------------------------|---|
| Availability | 1-3 business days |
| Species Reactivity | Human |
| Predicted Reactivity | Mouse, Rat |
| Format | Antigen affinity purified |
| Host | Rabbit |
| Clonality | Polyclonal (rabbit origin) |
| Isotype | Rabbit Ig |
| Purity | Antigen affinity |
| UniProt | P26358 |
| Applications | Dot Blot : 1:500 |
| Limitations | This phospho-Dnmt1 antibody is available for research use only. |

Dot blot analysis of phospho-Dnmt1 antibody. 50ng of phos-peptide or nonphos-peptide per dot were spotted.



Description

DNA (cytosine-5-)-methyltransferase 1 has a role in the establishment and regulation of tissue-specific patterns of methylated cytosine residues. Aberrant methylation patterns are associated with certain human tumors and developmental abnormalities. Two transcript variants encoding different isoforms have been found for this gene. [Wiki]

This antibody can be compared with our [DNMT1 Antibody](#) for consistent detection of DNMT1 across DNA methylation

and epigenetic regulation studies.

Application Notes

Titration of the phospho-Dnmt1 antibody may be required due to differences in protocols and secondary/substrate sensitivity.

Immunogen

This phospho-Dnmt1 antibody was produced from rabbits immunized with a KLH conjugated synthetic phosphopeptide corresponding to amino acid residues surrounding pS1105 of human Dnmt1.

Storage

Aliquot the phospho-Dnmt1 antibody and store frozen at -20oC or colder. Avoid repeated freeze-thaw cycles.