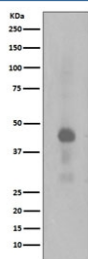


Phospho-CREB1 Antibody (pS133) [clone IG-3] (RQ5477)

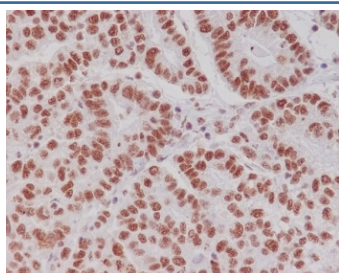
Catalog No.	Formulation	Size
RQ5477	Antibody in PBS with 0.02% sodium azide, 50% glycerol and 0.4-0.5mg/ml BSA	100 ul

[Bulk quote request](#)

Availability	1-2 weeks
Species Reactivity	Human
Format	Purified
Clonality	Rabbit Monoclonal
Isotype	Rabbit IgG
Clone Name	IG-3
Purity	Affinity purified
UniProt	P16220
Localization	Nuclear
Applications	Western Blot : 1:500-1:2000 Immunohistochemistry (FFPE) : 1:50-1:200
Limitations	This phospho-CREB1 antibody (pS133) is available for research use only.



Western blot testing of lysate from human HeLa cells treated with Calyculin A, with phospho-CREB1 antibody (pS133). Expected molecular weight: 37-43 kDa.



IHC staining of FFPE human gastric carcinoma with phospho-CREB1 antibody (pS133) antibody. HIER: boil tissue sections in pH6, 10mM citrate buffer, for 10-20 min and allow to cool before testing.

Description

The CREB1 gene encodes a transcription factor that is a member of the leucine zipper family of DNA binding proteins. This protein binds as a homodimer to the cAMP-responsive element, an octameric palindrome. The protein is phosphorylated by several protein kinases, and induces transcription of genes in response to hormonal stimulation of the cAMP pathway. Alternate splicing of this gene results in several transcript variants encoding different isoforms. [RefSeq]

Application Notes

Optimal dilution of the phospho-CREB1 antibody (pS133) should be determined by the researcher.

Immunogen

A synthetic peptide specific to human CREB (surrounding pS133) was used as the immunogen for the CREB1 antibody.

Storage

Store the phospho-CREB1 antibody (pS133) at -20oC.