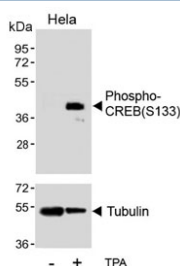


Phospho-CREB Antibody (pS133) (F54407)

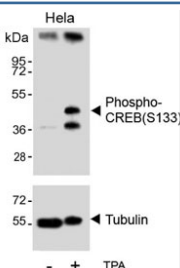
Catalog No.	Formulation	Size
F54407-0.4ML	In 1X PBS, pH 7.4, with 0.09% sodium azide	0.4 ml
F54407-0.08ML	In 1X PBS, pH 7.4, with 0.09% sodium azide	0.08 ml

[Bulk quote request](#)

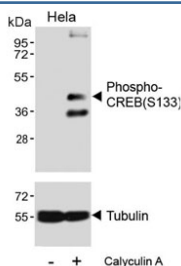
Availability	1-3 business days
Species Reactivity	Human
Format	Purified
Clonality	Polyclonal (rabbit origin)
Isotype	Rabbit Ig
Purity	Antigen affinity purified
UniProt	P16220
Localization	Nuclear
Applications	Immunohistochemistry (FFPE) : 1:25 Western Blot : 1:500-1:2000
Limitations	This phospho-CREB antibody is available for research use only.



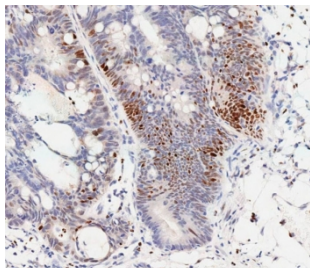
Western blot testing of lysate from HeLa cells treated or untreated with TPA, using phospho-CREB antibody.



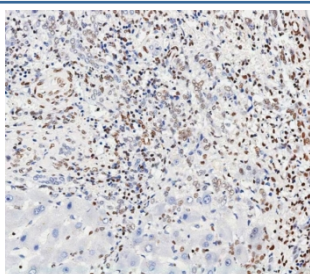
Western blot testing of lysate from HeLa cells treated or untreated with TPA, using phospho-CREB antibody.



Western blot testing of lysate from HeLa cells treated or untreated with Calyculin A, using phospho-CREB antibody.



IHC testing of FFPE human colon carcinoma tissue with phospho-CREB antibody. HIER: steam section in pH9 EDTA for 20 min and allow to cool prior to staining.



IHC testing of FFPE human hepatocarcinoma tissue with phospho-CREB antibody. HIER: steam section in pH9 EDTA for 20 min and allow to cool prior to staining.

Description

CREB is a transcription factor that is a member of the leucine zipper family of DNA binding proteins. This protein binds as a homodimer to the cAMP-responsive element, (CRE), a sequence present in many viral and cellular promoters. The protein is phosphorylated by several protein kinases, and induces transcription of genes in response to hormonal stimulation of the cAMP pathway.

Application Notes

The stated application concentrations are suggested starting points. Titration of the phospho-CREB antibody may be required due to differences in protocols and secondary/substrate sensitivity.

Immunogen

The amino acids surrounding phosphorylated serine 133 from the human protein were used as the immunogen for the phospho-CREB antibody.

Storage

Aliquot the phospho-CREB antibody and store frozen at -20oC or colder. Avoid repeated freeze-thaw cycles.

