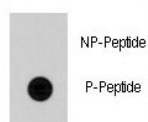


## Phospho-Cdc25A Antibody (pS79) (F48558)

Catalog No.	Formulation	Size
F48558-0.4ML	In 1X PBS, pH 7.4, with 0.09% sodium azide	0.4 ml
F48558-0.08ML	In 1X PBS, pH 7.4, with 0.09% sodium azide	0.08 ml

[Bulk quote request](#)

<b>Availability</b>	1-3 business days
<b>Species Reactivity</b>	Human
<b>Predicted Reactivity</b>	Bovine, Mouse, Rat
<b>Format</b>	Antigen affinity purified
<b>Host</b>	Rabbit
<b>Clonality</b>	Polyclonal (rabbit origin)
<b>Isotype</b>	Rabbit Ig
<b>Purity</b>	Antigen affinity
<b>UniProt</b>	P30304
<b>Applications</b>	Dot Blot : 1:500
<b>Limitations</b>	This phospho-Cdc25A antibody is available for research use only.



Dot blot analysis of phospho-Cdc25A antibody. 50ng of phos-peptide or nonphos-peptide per dot were spotted.

## Description

CDC25A is a member of the CDC25 family of phosphatases. CDC25A is required for progression from G1 to the S phase of the cell cycle. It activates the cyclin-dependent kinase CDC2 by removing two phosphate groups. CDC25A is specifically degraded in response to DNA damage, which prevents cells with chromosomal abnormalities from progressing through cell division. CDC25A is an oncogene, although its exact role in oncogenesis has not been demonstrated.

## Application Notes

Titration of the phospho-Cdc25A antibody may be required due to differences in protocols and secondary/substrate sensitivity.

## Immunogen

This phospho-Cdc25A antibody was produced from rabbits immunized with a KLH conjugated synthetic phosphopeptide corresponding to amino acid residues surrounding pS79 of human Cdc25A.

## Storage

Aliquot the phospho-Cdc25A antibody and store frozen at -20oC or colder. Avoid repeated freeze-thaw cycles.