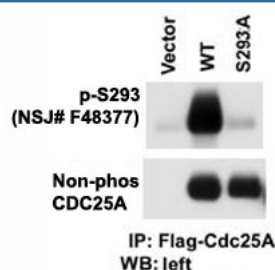


Phospho-CDC25A Antibody (pS293) (F48377)

Catalog No.	Formulation	Size
F48377-0.4ML	In 1X PBS, pH 7.4, with 0.09% sodium azide	0.4 ml
F48377-0.08ML	In 1X PBS, pH 7.4, with 0.09% sodium azide	0.08 ml

[Bulk quote request](#)

Availability	1-3 business days
Species Reactivity	Human
Format	Antigen affinity purified
Host	Rabbit
Clonality	Polyclonal (rabbit origin)
Isotype	Rabbit Ig
Purity	Antigen affinity
UniProt	P30304
Applications	Western Blot : 1:1000
Limitations	This phospho-CDC25A antibody is available for research use only.



Western blot testing of phospho-CDC25A antibody and cells transfected with wild type or mutant S293A of CDC25A. Data courtesy of Dr. Tiebang Kang of Washington University, St. Louis, MO.

Description

CDC25A is a member of the CDC25 family of phosphatases. CDC25A is required for progression from G1 to the S phase of the cell cycle. It activates the cyclin-dependent kinase CDC2 by removing two phosphate groups. CDC25A is specifically degraded in response to DNA damage, which prevents cells with chromosomal abnormalities from progressing through cell division. CDC25A is an oncogene, although its exact role in oncogenesis has not been demonstrated. Two transcript variants encoding different isoforms have been found for this gene.

Application Notes

Titration of the phospho-CDC25A antibody may be required due to differences in protocols and secondary/substrate sensitivity.

Immunogen

This phospho-CDC25A antibody was produced from rabbits immunized with a KLH conjugated synthetic phosphopeptide corresponding to amino acid residues surrounding pS293 of human CDC25A.

Storage

Aliquot the phospho-CDC25A antibody and store frozen at -20oC or colder. Avoid repeated freeze-thaw cycles.