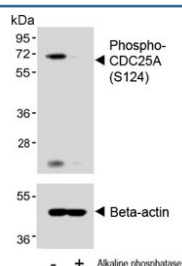


Phospho-CDC25A Antibody (pS124) (F54292)

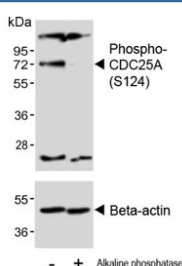
Catalog No.	Formulation	Size
F54292-0.4ML	In 1X PBS, pH 7.4, with 0.09% sodium azide	0.4 ml
F54292-0.08ML	In 1X PBS, pH 7.4, with 0.09% sodium azide	0.08 ml

[Bulk quote request](#)

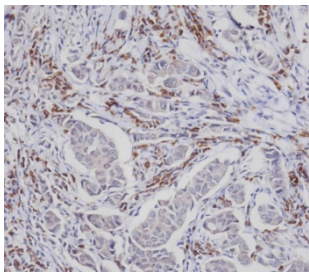
Availability	1-3 business days
Species Reactivity	Human
Format	Purified
Host	Rabbit
Clonality	Polyclonal (rabbit origin)
Isotype	Rabbit Ig
Purity	Antigen affinity purified
UniProt	P30304
Applications	Western Blot : 1:500-1:2000 Immunohistochemistry (FFPE) : 1:25
Limitations	This phospho-CDC25A antibody is available for research use only.



Western blot testing of lysate from human A2780 cells untreated or treated with alkaline phosphatase using phospho-CDC25A antibody. Predicted molecular weight: 59-70 kDa.



Western blot testing of lysate from human 293 cells untreated or treated with alkaline phosphatase using phospho-CDC25A antibody. Predicted molecular weight: 59-70 kDa.



IHC testing of FFPE human breast carcinoma tissue with phospho-CDC25A antibody.
HIER: steam section in pH9 EDTA for 20 min and allow to cool prior to staining.

Description

CDC25A is a member of the CDC25 family of phosphatases. CDC25A is required for progression from G1 to the S phase of the cell cycle. It activates the cyclin-dependent kinase CDC2 by removing two phosphate groups. CDC25A is specifically degraded in response to DNA damage, which prevents cells with chromosomal abnormalities from progressing through cell division. CDC25A is an oncogene, although its exact role in oncogenesis has not been demonstrated. Two transcript variants encoding different isoforms have been found for this gene.

Application Notes

The stated application concentrations are suggested starting points. Titration of the phospho-CDC25A antibody may be required due to differences in protocols and secondary/substrate sensitivity.

Immunogen

The amino acids surrounding phosphorylated serine 124 from the human protein were used as the immunogen for the phospho-CDC25A antibody.

Storage

Aliquot the phospho-CDC25A antibody and store frozen at -20oC or colder. Avoid repeated freeze-thaw cycles.