

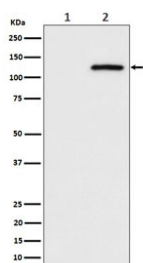
## Phospho-CBL Antibody (pS669) [clone 28C46] (RQ8379)

Catalog No.	Formulation	Size
RQ8379	Antibody in PBS with 0.02% sodium azide, 50% glycerol and 0.4-0.5mg/ml BSA	100 ul

Recombinant **RABBIT MONOCLONAL**

[Bulk quote request](#)

Availability	1-3 business days
Species Reactivity	Human
Format	Purified
Host	Rabbit
Clonality	Recombinant Rabbit Monoclonal
Isotype	Rabbit IgG
Clone Name	28C46
Purity	Affinity chromatography
UniProt	P22681
Applications	Western Blot : 1:500-1:2000
Limitations	This Phospho-CBL antibody is available for research use only.



Western blot testing of lysate from human HeLa cells 1) untreated and 2) pervanadate-treated, with Phospho-CBL antibody.

### Description

Casitas B-lineage lymphoma proto-oncogene / CBL is an adapter protein that functions as a negative regulator of many signaling pathways that are triggered by activation of cell surface receptors. [UniProt]

### Application Notes

Optimal dilution of the Phospho-CBL antibody should be determined by the researcher.

## Immunogen

A synthetic peptide derived from the area surrounding phosphorylated serine 669 of human CBL was used as the immunogen for the Phospho-CBL antibody.

## Storage

Store the Phospho-CBL antibody at -20oC.