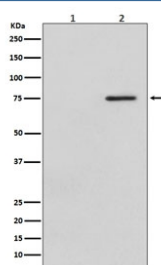


Phospho-c-Raf Antibody (pS621) [clone IOF-18] (RQ5031)

Catalog No.	Formulation	Size
RQ5031	Antibody in PBS with 0.02% sodium azide, 50% glycerol and 0.4-0.5mg/ml BSA	100 ul

[Bulk quote request](#)

Availability	1-2 weeks
Species Reactivity	Human
Format	Purified
Host	Rabbit
Clonality	Rabbit Monoclonal
Isotype	Rabbit IgG
Clone Name	IOF-18
Purity	Affinity purified
UniProt	P04049
Applications	Western Blot : 1:500-1:2000
Limitations	This phospho-c-Raf antibody is available for research use only.



Western blot testing of human HeLa cells 1) untreated and 2) treated with LP, with phospho-c-Raf antibody. Predicted molecular weight ~73 kDa.

Description

Serine/threonine-protein kinase that acts as a regulatory link between the membrane-associated Ras GTPases and the MAPK/ERK cascade, and this critical regulatory link functions as a switch determining cell fate decisions including proliferation, differentiation, apoptosis, survival and oncogenic transformation. RAF1 activation initiates a mitogen-activated protein kinase (MAPK) cascade that comprises a sequential phosphorylation of the dual-specific MAPK kinases (MAP2K1/MEK1 and MAP2K2/MEK2) and the extracellular signal-regulated kinases (MAPK3/ERK1 and MAPK1/ERK2). [UniProt]

Application Notes

Optimal dilution of the phospho-c-Raf antibody should be determined by the researcher.

Immunogen

A synthetic peptide specific to human Raf1 (surrounding pS621) was used as the immunogen for the phospho-c-Raf antibody.

Storage

Store the phospho-c-Raf antibody at -20oC.