

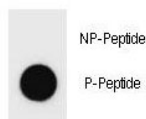
## Phospho-c-Kit Antibody (pY578) (F48719)

Catalog No.	Formulation	Size
F48719-0.4ML	In 1X PBS, pH 7.4, with 0.09% sodium azide	0.4 ml
F48719-0.08ML	In 1X PBS, pH 7.4, with 0.09% sodium azide	0.08 ml

### Bulk quote request

<b>Availability</b>	1-3 business days
<b>Species Reactivity</b>	Human
<b>Predicted Reactivity</b>	Bovine, Chicken, Mouse, Pig
<b>Format</b>	Antigen affinity purified
<b>Host</b>	Rabbit
<b>Clonality</b>	Polyclonal (rabbit origin)
<b>Isotype</b>	Rabbit Ig
<b>Purity</b>	Antigen affinity
<b>UniProt</b>	P10721
<b>Applications</b>	Dot Blot : 1:500
<b>Limitations</b>	This phospho-c-Kit antibody is available for research use only.

Dot blot analysis of phospho-c-Kit antibody. 50ng of phos-peptide or nonphos-peptide per dot were spotted.



## Description

This gene encodes the human homolog of the proto-oncogene c-kit. C-kit was first identified as the cellular homolog of the feline sarcoma viral oncogene v-kit. This protein is a type 3 transmembrane receptor for MGF (mast cell growth factor, also known as stem cell factor). Mutations in this gene are associated with gastrointestinal stromal tumors, mast cell disease, acute myelogenous leukemia, and piebaldism. Multiple transcript variants encoding different isoforms have been found for this gene.

## Application Notes

Titration of the phospho-c-Kit antibody may be required due to differences in protocols and secondary/substrate sensitivity.

## Immunogen

This phospho-c-Kit antibody was produced from rabbits immunized with a KLH conjugated synthetic phosphopeptide corresponding to amino acid residues surrounding pY578 of human c-Kit.

## Storage

Aliquot the phospho-c-Kit antibody and store frozen at -20oC or colder. Avoid repeated freeze-thaw cycles.