

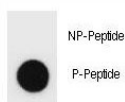
## Phospho-c-Kit Antibody (pS739) (F48709)

Catalog No.	Formulation	Size
F48709-0.4ML	In 1X PBS, pH 7.4, with 0.09% sodium azide	0.4 ml
F48709-0.08ML	In 1X PBS, pH 7.4, with 0.09% sodium azide	0.08 ml

[Bulk quote request](#)

<b>Availability</b>	1-3 business days
<b>Species Reactivity</b>	Mouse
<b>Format</b>	Antigen affinity purified
<b>Host</b>	Rabbit
<b>Clonality</b>	Polyclonal (rabbit origin)
<b>Isotype</b>	Rabbit Ig
<b>Purity</b>	Antigen affinity
<b>UniProt</b>	P05532
<b>Applications</b>	Dot Blot : 1:500
<b>Limitations</b>	This phospho-c-Kit antibody is available for research use only.

Dot blot analysis of phospho-c-Kit antibody. 50ng of phos-peptide or nonphos-peptide per dot were spotted.



## Description

The c-Kit proto-oncogene is the cellular homolog of the transforming gene of a feline retrovirus (v-Kit). The c-kit protein includes characteristics of a protein kinase transmembrane receptor. Alternatively spliced transcript variants encoding different isoforms have been found for this gene. [provided by RefSeq].

## Application Notes

Titration of the phospho-c-Kit antibody may be required due to differences in protocols and secondary/substrate sensitivity.

## Immunogen

This phospho-c-Kit antibody was produced from rabbits immunized with a KLH conjugated synthetic phosphopeptide corresponding to amino acid residues surrounding pS739 of mouse c-Kit.

## Storage

Aliquot the phospho-c-Kit antibody and store frozen at -20oC or colder. Avoid repeated freeze-thaw cycles.