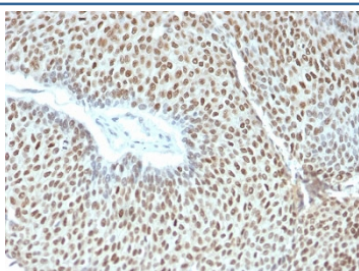


Phospho-c-Jun Antibody (pT91/93) [clone C-J 4C4/1] (V7427)

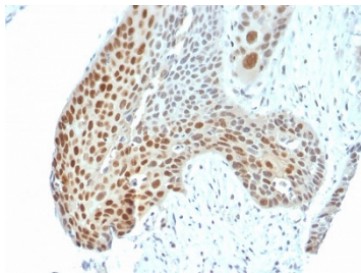
Catalog No.	Formulation	Size
V7427-100UG	0.2 mg/ml in 1X PBS with 0.1 mg/ml BSA (US sourced) and 0.05% sodium azide	100 ug
V7427-20UG	0.2 mg/ml in 1X PBS with 0.1 mg/ml BSA (US sourced) and 0.05% sodium azide	20 ug
V7427SAF-100UG	1 mg/ml in 1X PBS; BSA free, sodium azide free	100 ug
V7427IHC-7ML	Prediluted in 1X PBS with 0.1 mg/ml BSA (US sourced) and 0.05% sodium azide; *For IHC use only*	7 ml

[Bulk quote request](#)

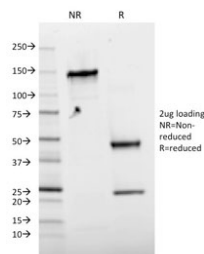
Availability	1-3 business days
Species Reactivity	Human
Format	Purified
Clonality	Monoclonal (mouse origin)
Isotype	Mouse IgG1, kappa
Clone Name	C-J 4C4/1
Purity	Protein G affinity chromatography
UniProt	P05412
Localization	Nuclear
Applications	Flow Cytometry : 0.5-1ug/10 ⁶ cells Immunofluorescence : 1-2ug/ml Western Blot : 0.5-1ug/ml Immunohistochemistry (FFPE) : 0.5-1ug/ml for 30 min at RT
Limitations	This phospho-c-Jun antibody is available for research use only.



IHC testing of FFPE human cervical tumor with phospho-c-Jun antibody (clone C-J 4C4/1). HIER: boil tissue sections in pH6, 10mM citrate buffer, for 10-20 min followed by cooling at RT for 20 min.



IHC testing of FFPE human cervical tumor with phospho-c-Jun antibody (clone C-J 4C4/1). HIER: boil tissue sections in pH6, 10mM citrate buffer, for 10-20 min followed by cooling at RT for 20 min.



SDS-PAGE analysis of purified, BSA-free phospho-c-Jun antibody (clone C-J 4C4/1) as confirmation of integrity and purity.

Description

This gene is the putative transforming gene of avian sarcoma virus 17. It encodes a protein which is highly similar to the viral protein, and which interacts directly with specific target DNA sequences to regulate gene expression. This gene is intronless and is mapped to 1p32-p31, a chromosomal region involved in both translocations and deletions in human malignancies. [RefSeq]

Application Notes

Optimal dilution of the phospho-c-Jun antibody should be determined by the researcher.

1. The prediluted format is supplied in a dropper bottle and is optimized for use in IHC. After epitope retrieval step (if required), drip mAb solution onto the tissue section and incubate at RT for 30 min.

Immunogen

The amino acids surrounding phosphorylated T91 and T93 were used as the immunogen for the phospho-c-Jun antibody.

Storage

Store the phospho-c-Jun antibody at 2-8°C (with azide) or aliquot and store at -20°C or colder (without azide).