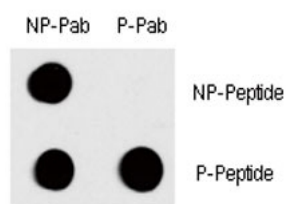


## Phospho-c-Fos Antibody (pT232) (F48478)

Catalog No.	Formulation	Size
F48478-0.4ML	In 1X PBS, pH 7.4, with 0.09% sodium azide	0.4 ml
F48478-0.08ML	In 1X PBS, pH 7.4, with 0.09% sodium azide	0.08 ml

[Bulk quote request](#)

<b>Availability</b>	1-3 business days
<b>Species Reactivity</b>	Human
<b>Format</b>	Antigen affinity purified
<b>Clonality</b>	Polyclonal (rabbit origin)
<b>Isotype</b>	Rabbit Ig
<b>Purity</b>	Antigen affinity
<b>UniProt</b>	P01100
<b>Applications</b>	Dot Blot : 1:500
<b>Limitations</b>	This phospho-c-Fos antibody is available for research use only.



Dot blot analysis of phospho-c-Fos antibody. 50ng of phos-peptide or nonphos-peptide per dot were spotted. P-Pab=phos-Ab; P-Peptide=phos-peptide; NP-Peptide=nonphos-peptide.

## Description

c-Fos is a nuclear phosphoprotein which forms a tight but non-covalently linked complex with the JUN/AP-1 transcription factor. In the heterodimer, FOS and JUN/AP-1 basic regions each seems to interact with symmetrical DNA half sites. On TGF-beta activation, forms a multimeric SMAD3/SMAD4/JUN/FOS complex at the AP1/SMAD-binding site to regulate TGF-beta-mediated signaling. Has a critical function in regulating the development of cells destined to form and maintain the skeleton. It is thought to have an important role in signal transduction, cell proliferation and differentiation. In growing cells, activates phospholipid synthesis, possibly by activating CDS1 and PI4K2A. This activity requires Tyr-dephosphorylation and association with the endoplasmic reticulum. [UniProt]

## Application Notes

Titration of the phospho-c-Fos antibody may be required due to differences in protocols and secondary/substrate sensitivity.

## Immunogen

This phospho-c-Fos antibody was produced from rabbits immunized with a KLH conjugated synthetic phosphopeptide corresponding to amino acid residues surrounding pT232 of the human protein.

## Storage

Aliquot the phospho-c-Fos antibody and store frozen at -20oC or colder. Avoid repeated freeze-thaw cycles.