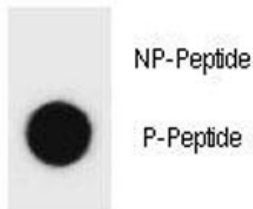


Phospho-Beclin 1 Antibody (pS64) (F48790)

Catalog No.	Formulation	Size
F48790-0.4ML	In 1X PBS, pH 7.4, with 0.09% sodium azide	0.4 ml
F48790-0.08ML	In 1X PBS, pH 7.4, with 0.09% sodium azide	0.08 ml

[Bulk quote request](#)

Availability	1-3 business days
Species Reactivity	Human
Format	Antigen affinity purified
Host	Rabbit
Clonality	Polyclonal (rabbit origin)
Isotype	Rabbit Ig
Purity	Antigen affinity
UniProt	Q14457
Applications	Dot Blot : 1:500
Limitations	This phospho-Beclin 1 antibody is available for research use only.



Dot blot analysis of phospho Beclin 1 antibody. 50ng of phos-peptide or nonphos-peptide per dot were spotted.

Description

Beclin-1 participates in the regulation of autophagy and has an important role in development, tumorigenesis, and neurodegeneration.

Application Notes

Titration of the phospho-Beclin 1 antibody may be required due to differences in protocols and secondary/substrate sensitivity.

Immunogen

This phospho-Beclin 1 antibody was produced from rabbits immunized with a KLH conjugated synthetic phosphopeptide corresponding to amino acid residues surrounding pS64 of human beclin 1.

Storage

Aliquot the phospho-Beclin 1 antibody and store frozen at -20oC or colder. Avoid repeated freeze-thaw cycles.