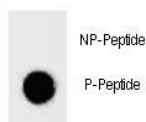


Phospho-BAD Antibody (pT137) (F48671)

Catalog No.	Formulation	Size
F48671-0.4ML	In 1X PBS, pH 7.4, with 0.09% sodium azide	0.4 ml
F48671-0.08ML	In 1X PBS, pH 7.4, with 0.09% sodium azide	0.08 ml

[Bulk quote request](#)

Availability	1-3 business days
Species Reactivity	Human
Predicted Reactivity	Mouse, Rat
Format	Antigen affinity purified
Host	Rabbit
Clonality	Polyclonal (rabbit origin)
Isotype	Rabbit Ig
Purity	Antigen affinity
UniProt	Q92934
Applications	Dot Blot : 1:500
Limitations	This phospho-BAD antibody is available for research use only.



Dot blot analysis of phospho-BAD antibody. 50ng of phos-peptide or nonphos-peptide per dot were spotted.

Description

The protein encoded by this gene is a member of the BCL-2 family. BCL-2 family members are known to be regulators of programmed cell death. This protein positively regulates cell apoptosis by forming heterodimers with BCL-xL and BCL-2, and reversing their death repressor activity. Proapoptotic activity of this protein is regulated through its phosphorylation. Protein kinases AKT and MAP kinase, as well as protein phosphatase calcineurin were found to be involved in the regulation of this protein. Alternative splicing of this gene results in two transcript variants which encode the same

isoform. [provided by RefSeq].

Application Notes

Titration of the phospho-BAD antibody may be required due to differences in protocols and secondary/substrate sensitivity.

Immunogen

This phospho-BAD antibody was produced from rabbits immunized with a KLH conjugated synthetic phosphopeptide corresponding to amino acid residues surrounding pT137 of human BAD.

Storage

Aliquot the phospho-BAD antibody and store frozen at -20oC or colder. Avoid repeated freeze-thaw cycles.