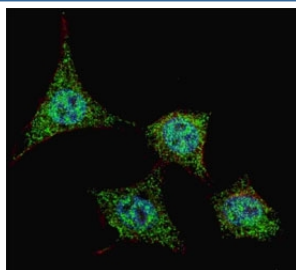


Phospho-Bad Antibody (pS99) (F48369)

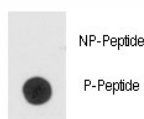
Catalog No.	Formulation	Size
F48369-0.4ML	In 1X PBS, pH 7.4, with 0.09% sodium azide	0.4 ml
F48369-0.08ML	In 1X PBS, pH 7.4, with 0.09% sodium azide	0.08 ml

[Bulk quote request](#)

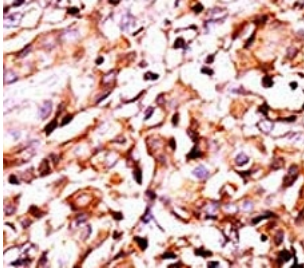
Availability	1-3 business days
Species Reactivity	Human
Predicted Reactivity	Mouse, Rat
Format	Antigen affinity purified
Clonality	Polyclonal (rabbit origin)
Isotype	Rabbit Ig
Purity	Antigen affinity
UniProt	Q92934
Applications	Immunofluorescence : 1:200 Dot Blot : 1:500 IHC (Paraffin) : 1:50-1:100
Limitations	This phospho-Bad antibody is available for research use only.



Fluorescent confocal image of HeLa cells stained with phospho-Bad antibody at 1:200. Note the highly specific localization of phos/nonphos-Bad, predominantly to the cytoplasm.



Dot blot analysis of phospho-Bad antibody. 50ng of phos-peptide or nonphos-peptide per dot were spotted.



IHC analysis of FFPE human breast carcinoma tissue stained with the phospho-Bad antibody.

Description

Bad is a member of the BCL-2 family. BCL-2 family members are known to be regulators of programmed cell death. This protein positively regulates cell apoptosis by forming heterodimers with BCL-xL and BCL-2, and reversing their death repressor activity. Proapoptotic activity of this protein is regulated through its phosphorylation. Protein kinases AKT and MAP kinase, as well as protein phosphatase calcineurin are found to be involved in the regulation of this protein. Bad is phosphorylated on one or more of Ser-75, Ser-99, Ser-118 and Ser-134 in response to survival stimuli, which blocks its pro-apoptotic activity. Phosphorylation on Ser-99 or Ser-75 promotes heterodimerization with 14-3-3 proteins. This interaction then facilitates the phosphorylation at Ser-118, a site within the BH3 motif, leading to the release of Bcl-X(L) and the promotion of cell survival. Ser-99 is the major site of AKT/PKB phosphorylation, Ser-118 the major site of protein kinase A (CAPK) phosphorylation.

Application Notes

Titration of the phospho-Bad antibody may be required due to differences in protocols and secondary/substrate sensitivity.

Immunogen

This phospho-Bad antibody was produced from rabbits immunized with a KLH conjugated synthetic phosphopeptide corresponding to amino acid residues surrounding pS99 of human Bad.

Storage

Aliquot the phospho-Bad antibody and store frozen at -20oC or colder. Avoid repeated freeze-thaw cycles.