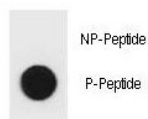


## Phospho-Bad Antibody (pS96) (F48801)

Catalog No.	Formulation	Size
F48801-0.4ML	In 1X PBS, pH 7.4, with 0.09% sodium azide	0.4 ml
F48801-0.08ML	In 1X PBS, pH 7.4, with 0.09% sodium azide	0.08 ml

[Bulk quote request](#)

<b>Availability</b>	1-3 business days
<b>Species Reactivity</b>	Mouse
<b>Format</b>	Antigen affinity purified
<b>Host</b>	Rabbit
<b>Clonality</b>	Polyclonal (rabbit origin)
<b>Isotype</b>	Rabbit Ig
<b>Purity</b>	Antigen affinity
<b>UniProt</b>	Q61337
<b>Applications</b>	Dot Blot : 1:500
<b>Limitations</b>	This phospho-Bad antibody is available for research use only.



Dot blot analysis of phospho-Bad antibody. 50ng of phos-peptide or nonphos-peptide per dot were spotted.

## Description

BAD promotes cell death. Successfully competes for the binding to Bcl-X(L), Bcl-2 and Bcl-W, thereby affecting the level of heterodimerization of these proteins with BAX. Can reverse the death repressor activity of Bcl-X(L), but not that of Bcl-2. Appears to act as a link between growth factor receptor signaling and the apoptotic pathways.

## Application Notes

Titration of the phospho-Bad antibody may be required due to differences in protocols and secondary/substrate sensitivity.

## Immunogen

This phospho-Bad antibody was produced from rabbits immunized with a KLH conjugated synthetic phosphopeptide corresponding to amino acid residues surrounding pS96 of mouse Bad.

## Storage

Aliquot the phospho-Bad antibody and store frozen at -20oC or colder. Avoid repeated freeze-thaw cycles.