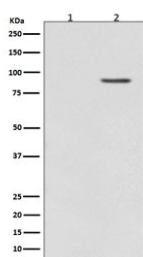


## Phospho-B Raf Antibody (pT401) [clone IBE-2] (RQ5439)

| Catalog No. | Formulation  | Size   |
|-------------|--|--------|
| RQ5439      | Antibody in PBS with 0.02% sodium azide, 50% glycerol and 0.4-0.5mg/ml BSA | 100 ul |

[Bulk quote request](#)

|                    |   |
|--------------------|---|
| Availability       | 1-2 weeks   |
| Species Reactivity | Human, Mouse, Rat   |
| Format             | Purified  |
| Clonality          | Rabbit Monoclonal   |
| Isotype            | Rabbit IgG  |
| Clone Name         | IBE-2   |
| Purity             | Affinity purified   |
| UniProt            | P15056  |
| Applications       | Western Blot : 1:500-1:2000   |
| Limitations        | This phospho-B Raf antibody (pT401) is available for research use only. |



Western blot testing of lysate from rat PC-12 cells 1) untreated or 2) treated with TPA, with phospho-B Raf antibody (pT401). Predicted molecular weight: 85-95 kDa.

## Description

The BRAF gene encodes a protein belonging to the RAF family of serine/threonine protein kinases. This protein plays a role in regulating the MAP kinase/ERK signaling pathway, which affects cell division, differentiation, and secretion. Mutations in this gene, most commonly the V600E mutation, are the most frequently identified cancer-causing mutations in melanoma, and have been identified in various other cancers as well, including non-Hodgkin lymphoma, colorectal cancer, thyroid carcinoma, non-small cell lung carcinoma, hairy cell leukemia and adenocarcinoma of lung. Mutations in this gene are also associated with cardiofaciocutaneous, Noonan, and Costello syndromes, which exhibit overlapping phenotypes. [RefSeq]

## Application Notes

Optimal dilution of the phospho-B Raf antibody (pT401) should be determined by the researcher.

## Immunogen

A synthetic peptide specific to human B Raf (surrounding pT401) was used as the immunogen for the phospho-B Raf antibody.

## Storage

Store the phospho-B Raf antibody (pT401) at -20oC.