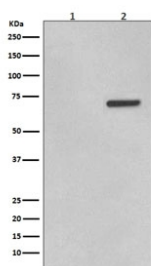


Phospho-ATF2 Antibody (pT71) / Activating Transcription Factor 2 [clone FOO-1] (RQ5448)

Catalog No.	Formulation	Size
RQ5448	Antibody in PBS with 0.02% sodium azide, 50% glycerol and 0.4-0.5mg/ml BSA	100 ul

[Bulk quote request](#)

Availability	1-2 weeks
Species Reactivity	Human
Format	Purified
Host	Rabbit
Clonality	Rabbit Monoclonal
Isotype	Rabbit IgG
Clone Name	FOO-1
Purity	Affinity purified
UniProt	P15336
Applications	Western Blot : 1:500-1:2000
Limitations	This phospho-ATF2 antibody (pT71) is available for research use only.



Western blot testing of lysate from human HeLa cells 1) untreated and 2) treated with Anisomycin, with phospho-ATF2 antibody (pT71). Expected molecular weight: 65-70 kDa.

Description

The ATF2 gene encodes a transcription factor that is a member of the leucine zipper family of DNA binding proteins. The encoded protein has been identified as a moonlighting protein based on its ability to perform mechanistically distinct functions. This protein binds to the cAMP-responsive element (CRE), an octameric palindrome. It forms a homodimer or a heterodimer with c-Jun and stimulates CRE-dependent transcription. This protein is also a histone acetyltransferase (HAT) that specifically acetylates histones H2B and H4 in vitro; thus it may represent a class of sequence-specific factors

that activate transcription by direct effects on chromatin components. The encoded protein may also be involved in cell's DNA damage response independent of its role in transcriptional regulation. [RefSeq]

Application Notes

Optimal dilution of the phospho-ATF2 antibody (pT71) should be determined by the researcher.

Immunogen

A synthetic peptide specific to human ATF2 (surrounding pT71) was used as the immunogen for the phospho-ATF2 antibody.

Storage

Store the phospho-ATF2 antibody (pT71) at -20oC.