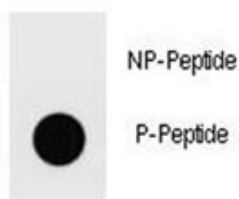


Phospho-Ammonium transporter Antibody (pT465) (F40066)

Catalog No.	Formulation	Size
F40066-0.4ML	In 1X PBS, pH 7.4, with 0.09% sodium azide	0.4 ml
F40066-0.08ML	In 1X PBS, pH 7.4, with 0.09% sodium azide	0.08 ml

[Bulk quote request](#)

Availability	1-3 business days
Format	Antigen affinity purified
Clonality	Polyclonal (rabbit origin)
Isotype	Rabbit Ig
Purity	Antigen affinity
UniProt	E2CWJ2
Applications	Dot Blot : 1:500
Limitations	This phospho-Ammonium transporter antibody is available for research use only.



Dot blot analysis of phospho-Ammonium transporter antibody. 50ng of phos-peptide or nonphos-peptide per dot were spotted.

Description

A member of the AMT family.

Application Notes

Titration of the phospho-Ammonium transporter antibody may be required due to differences in protocols and secondary/substrate sensitivity.

Immunogen

This phospho-Ammonium transporter antibody was produced from rabbits immunized with a KLH conjugated synthetic phosphopeptide surrounding pT465 of French bean Ammonium transporter.

Storage

Aliquot the phospho-Ammonium transporter antibody and store frozen at -20oC or colder. Avoid repeated freeze-thaw cycles.