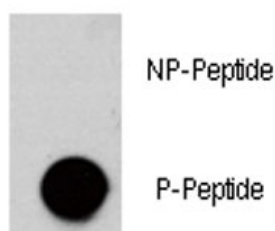


## Phospho-AKT3 Antibody (pS472) (F48535)

Catalog No.	Formulation	Size
F48535-0.4ML	In 1X PBS, pH 7.4, with 0.09% sodium azide	0.4 ml
F48535-0.08ML	In 1X PBS, pH 7.4, with 0.09% sodium azide	0.08 ml

[Bulk quote request](#)

<b>Availability</b>	1-3 business days
<b>Species Reactivity</b>	Human
<b>Predicted Reactivity</b>	Mouse, Rat
<b>Format</b>	Antigen affinity purified
<b>Clonality</b>	Polyclonal (rabbit origin)
<b>Isotype</b>	Rabbit Ig
<b>Purity</b>	Antigen affinity
<b>UniProt</b>	Q9Y243
<b>Applications</b>	Dot Blot : 1:500
<b>Limitations</b>	This phospho-AKT3 antibody is available for research use only.



Dot blot analysis of phospho-AKT3 antibody. 50ng of phos-peptide or nonphos-peptide per dot were spotted.

## Description

AKT3 is a member of the AKT, also called PKB, serine/threonine protein kinase family. AKT kinases are known to be regulators of cell signaling in response to insulin and growth factors. This kinase has been shown to be stimulated by platelet-derived growth factor (PDGF), insulin, and insulin-like growth factor 1 (IGF1).

## Application Notes

The stated application concentrations are suggested starting amounts. Titration of the phospho-AKT3 antibody may be required due to differences in protocols and secondary/substrate sensitivity.

## Immunogen

This phospho-AKT3 antibody was produced from rabbits immunized with a KLH conjugated synthetic phosphopeptide corresponding to amino acid residues surrounding pS472 of human AKT3.

## Storage

Store at 4°C for up to one month. For long term, aliquot the phospho-AKT3 antibody and store frozen at -20°C or colder. Avoid repeated freeze-thaw cycles.