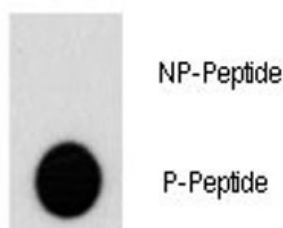


Phospho-AKT2 Antibody (pS474) (F48486)

Catalog No.	Formulation	Size
F48486-0.4ML	In 1X PBS, pH 7.4, with 0.09% sodium azide	0.4 ml
F48486-0.08ML	In 1X PBS, pH 7.4, with 0.09% sodium azide	0.08 ml

[Bulk quote request](#)

Availability	1-3 business days
Species Reactivity	Human
Format	Antigen affinity purified
Clonality	Polyclonal (rabbit origin)
Isotype	Rabbit Ig
Purity	Antigen affinity
UniProt	P31751
Applications	Dot Blot : 1:500
Limitations	This phospho-AKT2 antibody is available for research use only.



Dot blot analysis of phospho-AKT2 antibody. 50ng of phos-peptide or nonphos-peptide per dot were spotted. P-Pab=phos-Ab; P-Peptide=phos-peptide; NP-Peptide=nonphos-peptide.

Description

AKT2 is a putative oncogene encoding a protein belonging to a subfamily of serine/threonine kinases containing SH2-like (Src homology 2-like) domains. Furthermore, AKT2 was shown to be amplified and overexpressed in 2 of 8 ovarian carcinoma cell lines and 2 of 15 primary ovarian tumors. Overexpression of AKT2 contributes to the malignant phenotype of a subset of human ductal pancreatic cancers. AKT2 is a general protein kinase capable of phosphorylating several known proteins.

Application Notes

Titration of the phospho-AKT2 antibody may be required due to differences in protocols and secondary/substrate

sensitivity.

Immunogen

This phospho-AKT2 antibody was produced from rabbits immunized with a KLH conjugated synthetic phosphopeptide corresponding to amino acid residues surrounding pS474 of human AKT2.

Storage

Aliquot the phospho-AKT2 antibody and store frozen at -20oC or colder. Avoid repeated freeze-thaw cycles.